



Heathfield Avenue, Sunninghill

£315,000



Heatherlands, Heathfield Avenue, Sunninghill

First floor apartment forming part of a former country house located between Sunninghill and Sunningdale. The period property is for sale including a share of the freehold, parking and a garage.

FEATURES

- Share of freehold
- Remaining lease approx. 160 years
- Annual service charge £1,950 per annum
- First floor
- Bay window
- High ceilings
- Entryphone system

ACCOMMODATION

- Communal entrance
- Entrance hall
- Sitting/dining room
- Modern fitted kitchen
- Double bedroom with built in wardrobes

OUTSIDE

- Sweeping drive at entrance
- Off road parking to front
- Garage in block

EPC RATING

C

LOCAL AUTHORITY / COUNCIL TAX

Windsor and Maidenhead – Band D







Approximate Gross Internal Area
63.0 sq m / 678.0 sq ft

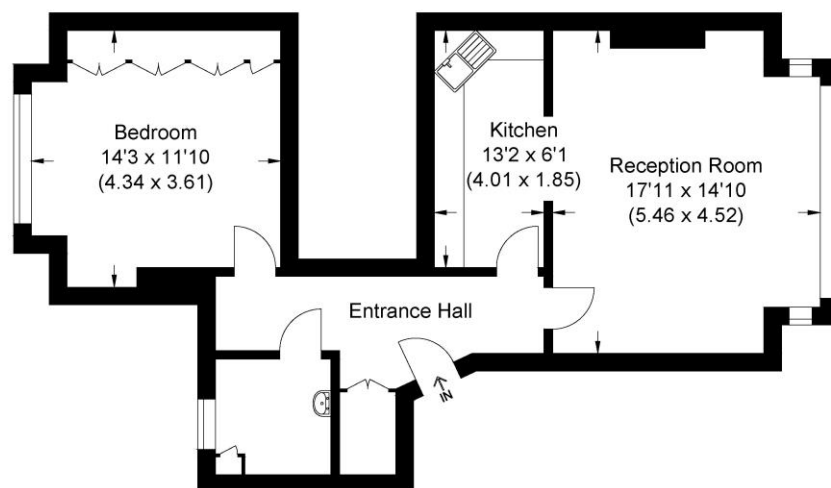
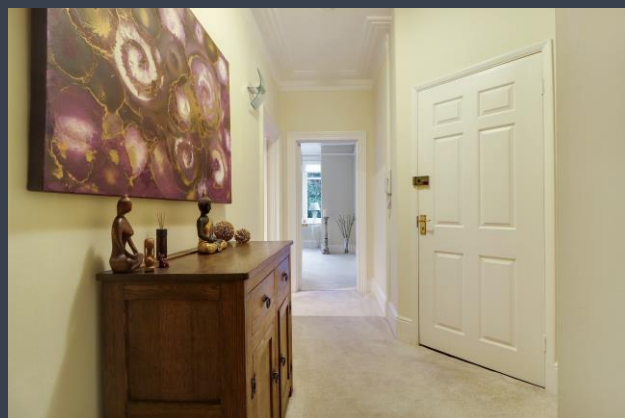


Illustration for identification purposes only, measurements are approximate, not to scale.

Disclaimer: We wish to inform prospective purchasers that we have prepared these sales particulars as a general guide. We have not carried out a detailed survey, nor tested the services, appliances and specific fittings. Room sizes are approximate and rounded: they are taken between internal wall surfaces and therefore include cupboards / shelves, etc. Accordingly, they should not be relied upon for carpeting, curtains / blinds and kitchen equipment, whether fitted or not, are deemed removable by the vendor unless specifically itemized within these.

Postcode for sat nav: SL5 0AN



The Old Dairy, 7 Updown Hill, Windlesham, Surrey GU20 6AF
enquiries@newtonrowe.co.uk | 01276 986900